

STANDARD ARRIVAL CHART
INSTRUMENT(STAR) - ICAO

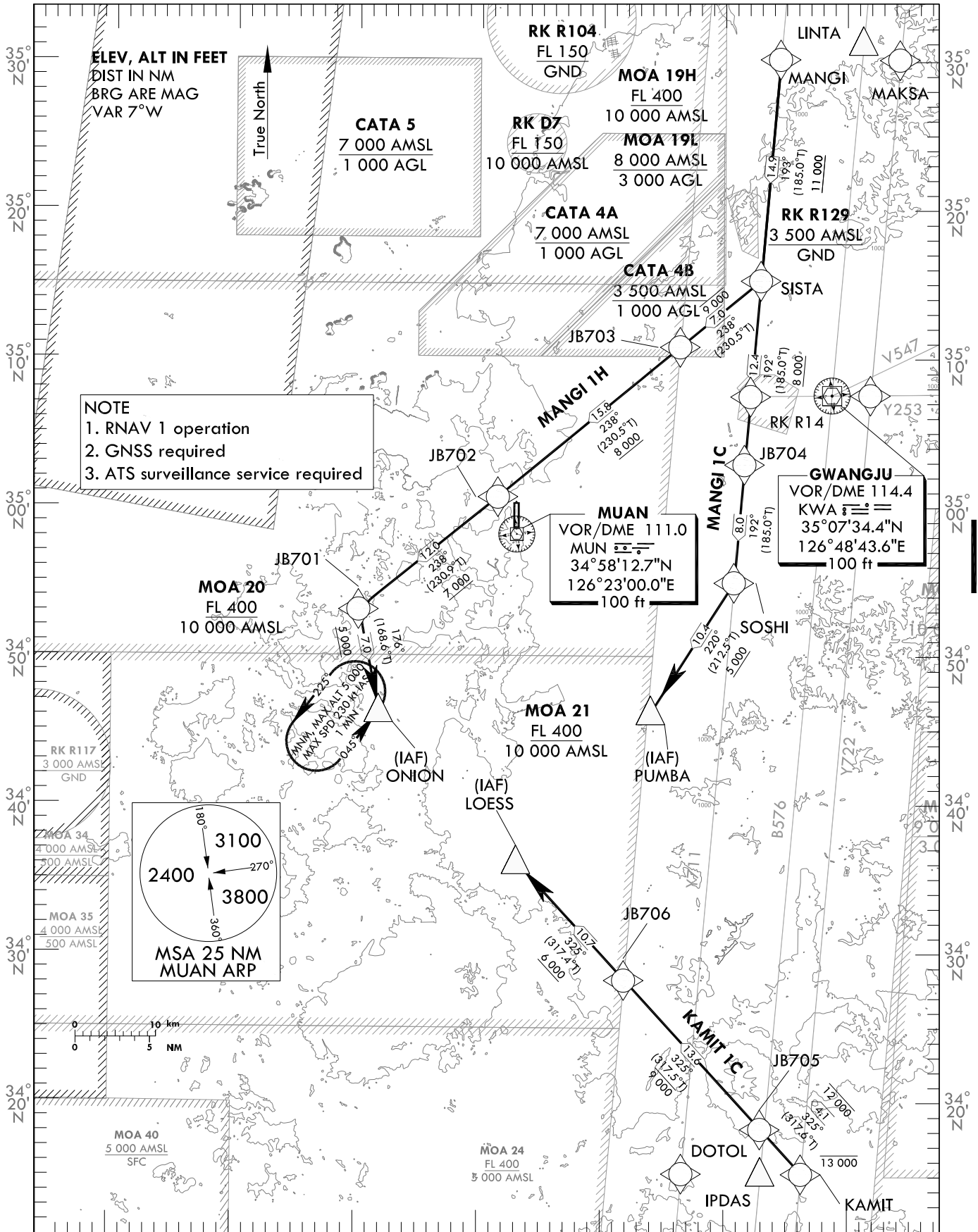
TRANSITION ALT 14 000
TRANSITION LVL FL 140

GWANGJU APP	120.475	130.0
	228.9	265.5
MUAN TWR	118.25	118.85

MUAN/Muan Intl(RKJB)

RWY 01
RNAV MANGI 1C
RNAV MANGI 1H
RNAV KAMIT 1C

Note : Arrival under ICAO Flight Procedures.



GENERAL INFORMATION

- Cross KAMIT at 270 kt IAS or less.
- RNAV MANGI ONE CHARLIE ARRIVAL : MANGI - SISTA - JB704 - SUSHI - PUMBA
RNAV MANGI ONE HOTEL ARRIVAL : MANGI - SISTA - JB703 - JB702 - JB701 - ONION
RNAV KAMIT ONE CHARLIE ARRIVAL : KAMIT - JB705 - JB706 - LOESS

Change : Amended coordinate format.

MUAN/Muan Intl(RKJB)
RWY 01
RNAV MANGI 1C, RNAV MANGI 1H, RNAV KAMIT 1C
HOLDING PROCEDURE
AERONAUTICAL DATA TABULATION

Standard Instrument Arrival Procedure Coding Tables

RNAV MANGI 1C

Serial Number	Path Descriptor	Waypoint Identifier	Fly-over	Course/Track °M(T)	Distance (NM)	Turn direction	Altitude (ft)	Speed (kt)	Coordinates	VPA/RDH	Navigation specification	Remarks
001	IF	MANGI	-	-	-	-	-	-	35°30'11.3"N 126°44'31.7"E	-	RNAV 1	-
002	TF	SISTA	-	193(185.0)	14.9	-	+11 000	-	35°15'18.1"N 126°42'56.2"E	-	RNAV 1	-
003	TF	JB704	-	192(185.0)	12.4	-	+8 000	-	35°02'56.4"N 126°41'37.3"E	-	RNAV 1	-
004	TF	SOSHI	-	192(185.0)	8.0	-	-	-	34°54'59.5"N 126°40'46.8"E	-	RNAV 1	-
005	TF	PUMBA	-	220(212.5)	10.4	-	+5 000	-	34°46'14.4"N 126°34'00.9"E	-	RNAV 1	IAF

RNAV MANGI 1H

Serial Number	Path Descriptor	Waypoint Identifier	Fly-over	Course/Track °M(T)	Distance (NM)	Turn direction	Altitude (ft)	Speed (kt)	Coordinates	VPA/RDH	Navigation specification	Remarks
001	IF	MANGI	-	-	-	-	-	-	35°30'11.3"N 126°44'31.7"E	-	RNAV 1	-
002	TF	SISTA	-	193(185.0)	14.9	-	+11 000	-	35°15'18.1"N 126°42'56.2"E	-	RNAV 1	-
003	TF	JB703	-	238(230.5)	7.0	-	-9 000	-	35°10'50.6"N 126°36'20.5"E	-	RNAV 1	-
004	TF	JB702	-	238(230.5)	15.8	-	+8 000	-	35°00'44.9"N 126°21'29.4"E	-	RNAV 1	-
005	TF	JB701	-	238(230.9)	12.0	-	+7 000	-	34°53'09.6"N 126°10'10.3"E	-	RNAV 1	-
006	TF	ONION	-	176(168.6)	7.0	-	+5 000	-	34°46'19.7"N 126°11'50.8"E	-	RNAV 1	IAF

RNAV KAMIT 1C

Serial Number	Path Descriptor	Waypoint Identifier	Fly-over	Course/Track °M(T)	Distance (NM)	Turn direction	Altitude (ft)	Speed (kt)	Coordinates	VPA/RDH	Navigation specification	Remarks
001	IF	KAMIT	-	-	-	-	-13 000	-270	34°15'14.1"N 126°46'17.7"E	-	RNAV 1	-
002	TF	JB705	-	325(317.6)	4.1	-	-12 000	-270	34°18'14.7"N 126°42'58.8"E	-	RNAV 1	-
003	TF	JB706	-	325(317.5)	13.6	-	-9 000	-270	34°28'15.6"N 126°31'54.1"E	-	RNAV 1	-
004	TF	LOESS	-	325(317.4)	10.7	-	+6 000	-	34°36'10.5"N 126°23'06.3"E	-	RNAV 1	IAF

HOLDING PROCEDURE

Holding Identification	Path Descriptor	Waypoint Identifier	Fly-over	Course/Track °M(T)	Time (min)	Turn direction	Altitude (ft)	Speed (kt)	Coordinates	VPA/RDH	Navigation specification	Remarks
RNAV MANGI 1H	HIM	ONION	Y	045 (037.7)	1	L	@5 000	-230	34°46'19.7"N 126°11'50.8"E	-	RNAV 1	-

Change : Amended coordinate format.

**STANDARD ARRIVAL CHART
INSTRUMENT(STAR) - ICAO**

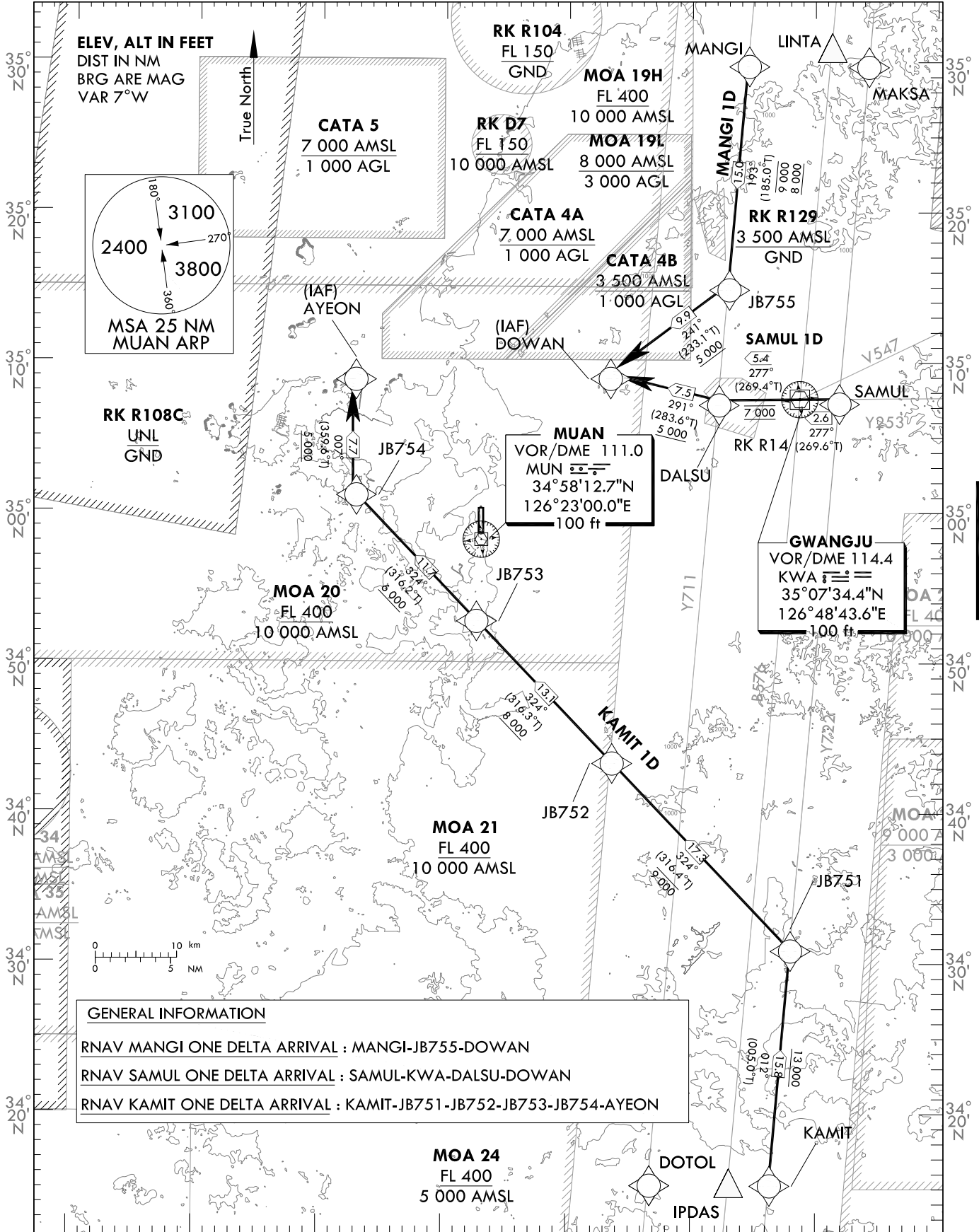
TRANSITION ALT 14 000
TRANSITION LVL FL 140

GWANGJU APP	120.475	130.0
	228.9	265.5
MUAN TWR	118.25	118.85

MUAN/Muan Intl(RKJB)

RWY 19
RNAV MANGI 1D
RNAV SAMUL 1D
RNAV KAMIT 1D

Note : Arrival under ICAO Flight Procedures.



GENERAL INFORMATION

RNAV MANGI ONE DELTA ARRIVAL : MANGI-JB755-DOWAN

RNAV SAMUL ONE DELTA ARRIVAL : SAMUL-KWA-DALSU-DOWAN

RNAV KAMIT ONE DELTA ARRIVAL : KAMIT-JB751-JB752-JB753-JB754-AYEON

NOTE

1. RNAV 1 operation
2. GNSS required
3. ATS surveillance service required

Change : Amended coordinate format.

MUAN/Muan Intl(RKJB)
RWY 19
RNAV MANGI 1D, RNAV SAMUL 1D
RNAV KAMIT 1D

AERONAUTICAL DATA TABULATION

Standard Instrument Arrival Procedure Coding Tables

RNAV MANGI 1D												
Serial Number	Path Descriptor	Waypoint Identifier	Fly-over	Course/Track °M(°T)	Distance (NM)	Turn direction	Altitude (ft)	Speed (kt)	Coordinates	VPA/RDH	Navigation specification	Remarks
001	IF	MANGI	-	-	-	-	-	-	35°30'11.3"N 126°44'31.7"E	-	RNAV 1	-
002	TF	JB755	-	193(185.0)	15.0	-	-9 000 +8 000	-	35°15'13.4"N 126°42'55.7"E	-	RNAV 1	-
003	TF	DOWAN	-	241(233.1)	9.9	-	+5 000	-	35°09'16.1"N 126°33'16.0"E	-	RNAV 1	IAF

RNAV SAMUL 1D												
Serial Number	Path Descriptor	Waypoint Identifier	Fly-over	Course/Track °M(°T)	Distance (NM)	Turn direction	Altitude (ft)	Speed (kt)	Coordinates	VPA/RDH	Navigation specification	Remarks
001	IF	SAMUL	-	-	-	-	-	-	35°07'35.5"N 126°51'54.4"E	-	RNAV 1	-
002	TF	KWA	-	277(269.6)	2.6	-	-	-	35°07'34.4"N 126°48'43.6"E	-	RNAV 1	-
003	TF	DALSU	-	277(269.4)	5.4	-	@7 000	-	35°07'31.0"N 126°42'06.5"E	-	RNAV 1	-
004	TF	DOWAN	-	291(283.6)	7.5	-	+5 000	-	35°09'16.1"N 126°33'16.0"E	-	RNAV 1	IAF

RNAV KAMIT 1D												
Serial Number	Path Descriptor	Waypoint Identifier	Fly-over	Course/Track °M(°T)	Distance (NM)	Turn direction	Altitude (ft)	Speed (kt)	Coordinates	VPA/RDH	Navigation specification	Remarks
001	IF	KAMIT	-	-	-	-	-	-	34°15'14.1"N 126°46'17.7"E	-	RNAV 1	-
002	TF	JB751	-	012(005.0)	15.8	-	+13 000	-	34°30'57.9"N 126°47'58.1"E	-	RNAV 1	-
003	TF	JB752	-	324(316.4)	17.3	-	-9 000	-	34°43'31.2"N 126°33'28.6"E	-	RNAV 1	-
004	TF	JB753	-	324(316.3)	13.1	-	+8 000	-	34°53'01.3"N 126°22'26.0"E	-	RNAV 1	-
005	TF	JB754	-	324(316.2)	11.7	-	+6 000	-	35°01'25.8"N 126°12'36.4"E	-	RNAV 1	-
006	TF	AYEON	-	007(359.6)	7.7	-	+5 000	-	35°09'10.2"N 126°12'32.1"E	-	RNAV 1	IAF

Change : Amended coordinate format.